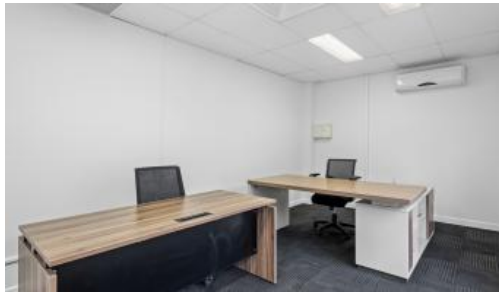




24 Musgrave Ave, Southport



## Centrally located office space in Trendy Chirn Park Precinct

Delmege Agency Commercial is pleased to offer for lease a modern moderate sized office in the heart of the popular Chirn Park precinct.

24 Musgrave Avenue offers a versatile opportunity for a number of business operators in the heart of one of the Gold Coasts most coveted locations. This tenancy is suitable for a range of operators who are seeking a small independent office space in a ideal location. Parking Available.

Chirn Park is fast becoming the most progressive and trendy suburb on the Gold Coast. Benefiting from effortless access to an array of cafes, restaurants, shopping, parks, the Gold Coast Broadwater & excellent transport links including the G-Link (Light Rail), Smith Street Motorway, & the Gold Coast Highway. A short drive away is Harbour Town, Australia Fair and the Pacific Motorway.

### KEY FEATURES:

- Approx 30m2\* Ground floor
- Recently Refurbished/Fitout



Price

Contact Exclusive Agent

Property Type

Commercial

Property ID 232

Office Area 30 m2

### Agent Details


Marco Kuzmanovski -  
0490177683

Brett Delmege - 0408 432 687

### Office Details

Delmege Agency  
Level 2, Short Street Southport,  
QLD, 4215 Australia  
07 5511 7021

**DELMEGE**

- 
- \* Modern Exclusive use kitchen
  - Main road position & exceptional Exposure
  - Multiple on-site car parks
  - Quality designed concrete tilt panel construction, boasting a modern presented fit out
  - Functional, high-quality office fit-out
  - Open-plan office space
  - Access to Male/Female & disabled amenities

For further information or to inspect, please contact Marco Kuzmanovski on 0490 177 683.

The above information provided has been furnished to us by the vendor/s. We have not verified whether or not that information is accurate and do not have any belief in one way or the other in its accuracy. We do not accept any responsibility to any person for its accuracy and do no more than pass it on. All interested parties should make and rely upon their own inquiries in order to determine whether or not this information is in fact accurate.